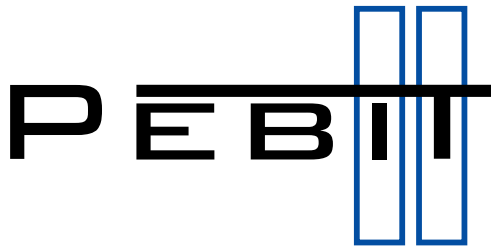


# Product Catalogue 2025



PRODUCTS FOR **ROAD**  
**CONSTRUCTION** INDUSTRY

---

#PAVINGTHEWAYWITHPEBIT



Dear Customers, we are pleased to present the next edition of our catalogue.

PEBIT offers an ever-increasing range of products used in the production of bituminous mixtures, in their laying, as well as in the long term for repairing and maintaining road surfaces. The experience we have gained allows us to provide reliable advice on choosing the right product for your needs. We are looking forward to doing business with you. PEBIT

We are looking forward to doing business with you.

PEBIT

## Product list

### Products for road construction

PEBIT Expansion Joint Tape	4
PEBIT Sealing Tape	5
PEBIT Thixotropic Contact Adhesive (Solvent-based)	6
PEBIT Thixotropic Contact Adhesive (Water-based)	6
Hot Pour Sealant PEBIT TL 82 Type N2	7
Hot Pour Sealant PEBIT N-10	8
Hot Pour Sealant PEBIT N1	8
Hot Pour Sealant PEBIT SB-20	9
Primer for Hot Pour Sealant	9
Road Sealant	10
PEBIT String for Hot Pour Sealant	10
Hot Pour Sealant EUROLASTIC TC 30 G	11
EUROLASTIC Primer U 12 G	11
Cold Pour Sealant HETEX	12
PEBIT Cold Pour Sealant	12
PEBIT Fast-Drying Sealant	13
PEBIT Sealant	14
PEBIT Repair Mortar	15
PEBIT Red-Colored Asphalt Granulate	16
PEBIT Red-Colored Expansion Joint Tape	16
PEBIT Red-Colored Sealing Tape	16
PEBIT Red-Colored Hot Pour Sealant	16
PEBIT Red-Colored Repair Mortar	16
PEBIT Reactive Asphalt Concrete	17
PEBIT Asphalt Granulate	18
GILSOFIX Crack Repair Mortar	20
ROMPOX® D4000 HR Repair Mortar	21
ROMPOX® Grouting Mortar	21
EUROREPAIR PC 96	22
EUROREPAIR PC 96 AS	23
Road Asphalt	24
Cold Asphalt Mix	25
EUROLASTIC PRO M 40	25
Fast-Hardening Cement Mortar	26
Noise Reduction Paste	26
Metal Sheet for Covering Wells	27
Basket for Sheets	27
Manhole Cover Protection	27
Adjusting Rings	28
Debris Catching Plate	29
Metal Formwork	29
Pneumatic Formwork	29
Asphacal TC	30
Fiberglass Reinforcement Mesh	31
White Solvent-Based Acrylic Paint	32
Colored Solvent-Based Acrylic Paint	32
Spray Primer	32
Spray Cleaning Cloth	32
Geodetic-Road Spray S Mark	33
Geodetic-Road Spray Fluo TP	33
Loose Absorbent	34
Absorbent Mat (Roll)	34
Absorbent Mat (Sheets)	34
Rakes and Squeegees	34
Cleaning Cloth	35
BUUMOSOL Cleaning Cloth	35
PEBIT Separation Concentrate	35
Bitumen Applicator	36
Manual Applicator	36
Watering Cans for Hot Pour Sealants and Road Asphalt	36
Titanium Burner Sievert	36
Electronic Level	37
VOLTCRAFT UKT-100 Thermometer -40 to 280°C	37
Measuring Wheel	37
Measuring Wheel with Tally Counter on the Handle	37

Smart Pass	38
SmartBPass	38
Active Sign D6	39
Active Illumination	39
Anti-Slip Surface ASE	39
Bitumen Mass Shovel	40
Hardened "T" Handle Spade	40
Wooden Putty Knife	40
Wooden Trowel	40
Rubber Trowel	40
Tamper	40
SDS Tamper	40
Silicone Carton	40
Pin with a Ring L=1200 mm	40
Dried Sand	41
Coated Aggregate	41
PAK SPRAY Tar Detector	41
Road Sign Invalidating Tape	41
Traffic Lane Tape	41
Cutting Discs Berner and Cedima	41
WAMPIRKI Work Gloves	41
Protective Gloves Made of Polyester, Latex-Coated	42
Engelbert Strauss Jacket	42
Reflective Fleece	42
Reflective Jackets	42
PEBIT Road Tape 100 mm	42

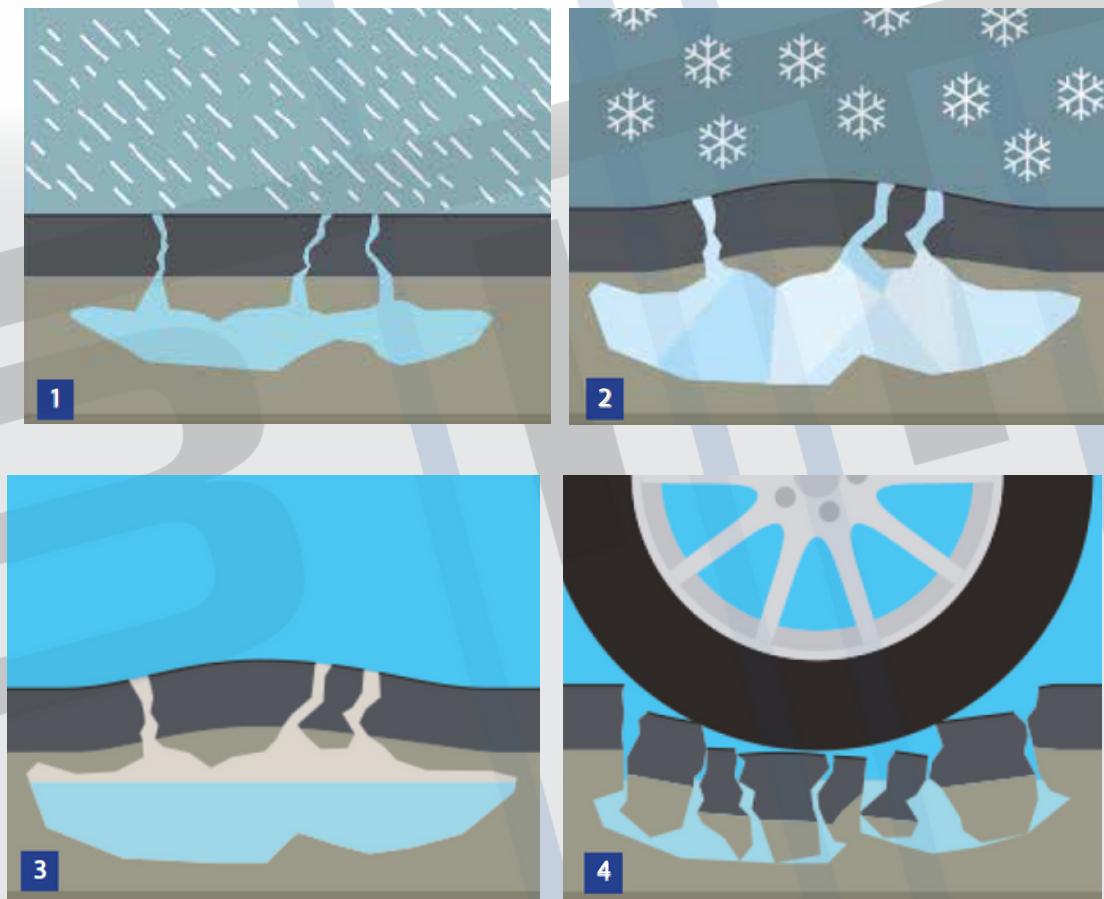
### Traffic Safety Elements

Warning Tape	43
Traffic Barrier with Legs	43
Traffic Direction Lollipop	43
LUX 1 Glass Reflective Element White 50 mm	43
LUX 1 Glass Reflective Element Red 50 mm	43
PVC Cat's Eye White/Red	43
PVC Cat's Eye White/White	43
Speed Bump 50 mm	43
Clearance Limiters	44
28 kg Flexible Heavy Base	44
Flexible Traffic Sign U-21 Wiva	44
Rubber Base Wiva	44
Painted Cones	44
Stickered Cones	44
Pylon U-5a/U-5b	44
Barrier Posts	44
PEO S-1 Spot Reflective Element	44
PEO S-2 Spot Reflective Element	45
APEO S-3 Active Spot Reflective Element	45
APEO S-4 Active Spot Reflective Element Cable	45
APEO S-4 Dynamic Active Spot Reflective Element	45
APEO S-4 DN Active Spot Reflective Element	45
APEO S-4 MAX Active Spot Reflective Element	45

### Products for Bitumen Production Plants

PEBICELL	48
PEBICELL AD	48
PEBICELL AD BIT	48
Adhesive Agent IMPACT 8100	49
EVOTHERM	50
EVOFLEX	51
Innodur PUR AD Wax	51
RABUFLEX	52
Natural Asphalt	53
Granulate for Mineral-Asphalt Mixtures	53
Pigment	54
RAR-X Rubber-Asphalt Granulate	54
Rubber Granulate	54
Cleaning Cloth	55
BUUMOSOL Cleaning Cloth	55
PEBIT Separation Concentrate	55

# The stages of asphalt pavement degradation



- 1** In the case of damaged pavement, water can penetrate into the subbase layer.
- 2** In winter, the water freezes, expands, and lifts the surface upwards.
- 3** After thawing, water and an empty space remain beneath the lifted surface.
- 4** Pavement under traffic load sinks, creating hazardous depressions

**Many of the products presented in this catalog will allow you to protect the pavement in such a way as to prevent such damages and to repair any existing damage, thus preventing further degradation of the surface**

**We invite you to collaborate with us!**

PEBIT  
Expansion joint tape



Self-adhesive expansion joint tape is a product designed for use in road construction. It is used to protect all kinds of joints from the subsequent formation of gaps, penetration of water and thus degradation of the road surface

Use:

- for spot repairs, to bind the old road surface with the new one
- to bind two new road surfaces in the case of a single laying of the mixture over half of the roadway and at the joints of processed plots
- to bind surfaces with elements such as curbs, drains, manholes, gutters
- to bind road surfaces and tram rails

Expansion joint tape	Quantity in a cardboard box 	Quantity on a pallet 
30x5 mm	80 m	1920 m
35x5 mm	60 m	1440 m
40x5 mm	60 m	1440 m
50x5 mm	60 m	1440 m
30x8 mm	56 m	1008 m
40x8 mm	42 m	1008 m
30x10 mm	48 m	1152 m
40x10 mm	36 m	864 m
50x10 mm	36 m	864 m
30x15 mm	32 m	576 m
40x15 mm	24 m	576 m

Other sizes available on request.







## PEBIT Sealing tape

  
62 m

  
1 860 m



Sealing tape is a product intended for use in road construction. It is used as a protective layer and is applied on the top of the joints between asphalt and all kinds of gaps, cracks in asphalt pavements with a width of up to 3 mm.

Sealing tape	Quantity in a cardboard box 	Quantity on a pallet 
35x3 mm	62 m	1 860 m
40x3 mm	62 m	1 860 m
50x3 mm	62 m	1 860 m



## PEBIT Thixotropic solvent-based contact adhesive

  
25 kg  
  
400 kg



ESTOL – a thixotropic solvent-based contact adhesive with a paste consistency is used to seal and bond the sides of process joints in all layers of asphalt. ESTOL – contact adhesive is a polymer-modified bitumen solution, characterized by high tensile stress absorption and thixotropic properties.

### Material consumption:

- approx. 40-50 g/rm and cm of cut edge



## PEBIT Thixotropic water-based contact adhesive

  
25 kg  
  
450 kg



Joint adhesive permanently and firmly connects individual strips of asphalt pavement. The joint becomes resistant to tensile force and is protected against water penetration. Joint adhesive is used in hot-to-cold applications and when a permanent joint connection is required. The paste contains a large amount of polymers. Due to the excellent elastic properties of the bonding agent, high tensile forces can be absorbed and the joint is permanently sealed.

### Material consumption:

- approx. 30 g/rm and 1 cm of surface thickness. Material consumption depends on ambient conditions and condition of the edge.



### ACCESORIES



Application machine



## PEBIT TL 82 type N2 Hot-applied joint sealant



10 kg



25 kg



600 kg



Plastic-elastic bituminous compound for hot pouring. The TL 82 joint sealant is used for sealing gaps in concrete roadways, concrete structural elements, in civil engineering structures above and below ground, in covering asphalt concrete expansion joints in bridge surfaces. It is also suitable for asphalt surface repair work. The TL 82 joint sealant meets the requirements

- Application temperature approx. 150 - 180°C
- Density approx. 1,13 t/m<sup>3</sup>

**Formula for material consumption calculation:** joint length (m) x joint width (m) x joint depth (m) x mass density (kg/m<sup>3</sup>) = consumption in kilograms.



7



S8 EXPRESSWAY BIAŁYSTOK-WARSZAWA

### ACCESSORIES



Bitumen  
sealer



Sealer  
applicator



Bitumen  
pouring can 8 l



Bitumen  
pouring can 3,5 l

# PEBIT N-10

## Hot-applied joint sealant

  
12 kg

  
720 kg



# PEBIT N1

## Hot-applied joint sealant

  
10 kg

  
800 kg



Hot-applied joint sealant N-10 is used for filling joints between concrete elements, concrete and asphalt surfaces, as well as granite and concrete blocks. PEBIT N-10 joint sealant meets the requirements for hot sealants in accordance with DIN EN 14188-1.

### Material consumption:

- approx. 1,3 t/m3



Hot-applied joint sealant N1 is used for filling joints between concrete elements, concrete and asphalt surfaces, as well as sidewalk slabs. It is very flexible. PEBIT N1 joint sealant meets the requirements for hot sealants in accordance with DIN EN 14188-1, type N 1. Before use, it is necessary to apply a primer.

### Material consumption:

- approx. 1,15 t/m3



### ACCESORIES



Sealer applicator



Bitumen pouring can 8 l



Bitumen pouring can 3,5 l



Bitumen pouring can with spout 3.5 l



## PEBIT SB-20 Hot-applied joint sealant



25 kg



600 kg



## Primer for hot-applied joint sealant



10 l



30 l



PEBIT SB-20 hot-applied joint sealant is a bituminous sealant for filling gaps near rails in traffic areas. PEBIT SB-20 joint sealant meets the requirements for hot sealants in accordance with DIN EN 14188-1.

### Material consumption:

- approx. 1,28 t/m<sup>3</sup>

Used for priming surfaces before the application of the hotapplied joint sealant. Apply to cover the entire edges with a thin layer. The primer must be completely dried before pouring.

### Material consumption:

- approx. 3% of the volume of joint sealant

### Easy application!



### ACCESORIES



Sealer  
applicator



Bitumen pouring  
can 8 l



Bitumen pouring  
can 3,5 l



Bitumen poruing  
can with spout 3.5 l

## Road seals



Road seals are expansion profiles covering gaps, made of solid EPDM.

- Color: Black
- Hardness: 70 ± 5 Shore

The material is characterized by chemical resistance, good resistance to atmospheric factors and ozone. It is also a good electrical insulator.

## PEBIT

### Cord for hot-applied joint sealant



Made of heat resistant plastic. Specially designed for hot-applied sealants. It allows a significant reduction in the use of hot-applied joint sealant.

Used for press-filling deep gaps. Press the cord to the desired depth and then fill the gap with the sealant.

#### Available diameters / number of running meters on the reel:

- |                  |                 |                 |
|------------------|-----------------|-----------------|
| • 10 mm / 1700 m | • 19 mm / 500 m | • 32 mm / 190 m |
| • 13 mm / 1100 m | • 22 mm / 360 m |                 |
| • 15 mm / 780 m  | • 25 mm / 280 m |                 |





## EUROLASTIC TC 30G Joint sealant



4 l



10 l



20 l



## Eurolastic Primer U 12 G



0,5 l



1 l



4 l



Gray or black colour. A two-component polysulfide-based joint sealant used in road construction for structures such as highways, parking lots, airports, squares or concrete roads.

### Features:

- excellent flexibility at temperatures up to -40°C
- resistant to fuels, oils, road salts and most chemicals
- high weather resistance
- elastic recovery > 85%
- rapid curing

### Storage:




At 10-25°C for no longer than 12 months.

Epoxy resin-based two-component primer. For surface priming before the application of the EUROLASTIC TC 30G sealant.

### Material consumption:

- approx. 3% of the volume of joint sealant



-  EUROLASTIC TC 20 G Joint Sealant
-  EUROLASTIC Primer U 12 G Primer
-  Cord for hot-applied joint sealant

### ACCESORIES



Compressed air gun  
2 l



Compressed air gun  
4 l



Hand gun  
600 ml



## HETE X Cold-applied joint sealant



10 kg



## PEBIT Cold-applied joint sealant



25 kg



350 kg



Hetex is a two-component compound for repairing small hairline cracks, clusters of cracks and single, up to 10 mm wide cracks. The product is resistant to many acids and fuels. The product is suitable for cold-pouring and provides a tight seal of cracks and cavities. Hetex quickly achieves mechanical strength and is solvent-free.

Solvent-free, highly modified asphalt emulsion with additives, with elasticity above 60%. It is used to remove small spider web cracks in the surface and to fill up to 0.5 cm wide cracks in the surface to protect them from the harmful effect of water penetration in winter.

12

### Product features

- Sealant content > 9% (by weight)
- Loss of weight due to evaporation (at 40 g sample weight) < 30% (by weight)
- Softening point, ring and ball test, sealant sample > 35°C
- Elastic recovery > 50%
- Aggregate < 20%





## PEBIT Quick-drying sealing compound

  
26,5 kg



A two-component, quick-drying sealant:

- water-free, consists of 100% active substance
- black colour
- high abrasion resistance

### Use:

- rough sealing of asphalt surfaces to protect it from damage
- by leaking gasoline, kerosene, diesel and engine oil

- surface sealing to increase the durability of its texture
- surface sealing to facilitate cleaning and maintenance

### Consumption:

- fine, rough, closed surface: 1.0-1.5 kg/m<sup>2</sup>
- more open textures and less sharp: up to 2.5 kg/m<sup>2</sup>



### ACCESORIES



Rubber float



Dried sand

## PEBIT Sealing compound

Solvent-based



30 kg



420 kg



Water-based



30 kg



720 kg

The sealing compound is a ready-to-use product. It is used to fill surface pores and ravelings to protect pavements from degradation due to water infiltration in winter.

**Available water-based and solvent-based versions. The latter one is also suitable for use in winter.**

- Consumption: approx. 1 kg per m<sup>2</sup>.

14



ROAD DW 504



S 51 ROAD IN THE CITY OF OLSZTYN



S 51 ROAD IN THE CITY OF OLSZTYN

### ACCESORIES



Rubber float



Dried sand



## PEBIT Repair mortar

  
16 kg

  
528 kg



Solvent-free, cold-applied repair mortar is a material used for minor road repairs to fill small potholes, remove unevenness, cavities and road ruts. Applicable for all traffic category roads.

Available grain sizes: 0.3; 0.5; and 0.8 mm.

### Material consumption:

- approx. 20 kg/m<sup>2</sup> (1 cm layer thickness)



15



BIKE PATH IN OLSZTYN BEFORE APPLICATION



BIKE PATH IN OLSZTYN AFTER APPLICATION



BEFORE APPLICATION



IMMEDIATELY AFTER APPLICATION



ONE YEAR AFTER APPLICATION

## BIKE PATH REPAIR PRODUCTS



### PEBIT Coloured mastic asphalt granulate



It is a non-porous, thermoplastic asphalt with a 0/4 mm grain size, ready to use in granule form. It can be heated using a gas burner. Colour: shade of red

#### Material consumption:

- approx. 25 kg/m<sup>2</sup> (1 cm layer thickness)

### PEBIT Coloured expansion joint tape

40x5 mm



60 mb



Red, self-adhesive expansion joint tape is a product designed for use in road construction. It is used to protect all kinds of joints from the subsequent formation of gaps, penetration of water and thus degradation of the road surface.

Colour: shade of red

### PEBIT Coloured sealing tape

35x3 mm



62 mb



Sealing tape is a product designed for use in road construction. It is used to protect joints between asphalt layers by adhering to the surface, as well as to seal various types of cracks and fissures in asphalt pavements up to 3 mm wide.

Colour: shade of red

### PEBIT Coloured hot-applied joint sealant



15 kg



30 kg



Plastic-elastic red bituminous compound for hot pouring. Colour: shade of red

### PEBIT Coloured repair mortar



14 kg



Use, grain size and consumption as in the case of the PEBIT Repair mortar.

Colour: shade of red



## PEBIT Reactive asphalt concrete



20 kg



660 kg



Reactive asphalt concrete is a product with properties comparable to hot-applied joint sealant. Used for levelling as well as for filling surface potholes. Available grain sizes: 0.3, 0.5, 0.8 and 0.11 mm.

### Material consumption:

- approx. 20 kg/m<sup>2</sup> (1 cm layer thickness)



### ACCESORIES



Hand tamper



SDS tamper



Dried sand



# PEBIT

## Mastic asphalt granulate



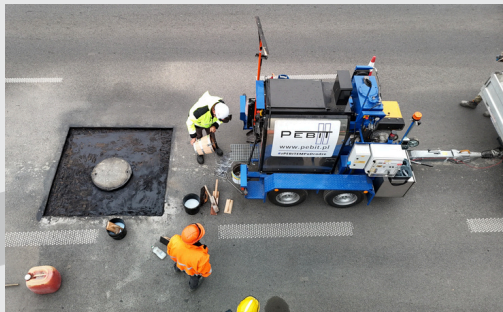
It is a non-porous, thermoplastic asphalt with a grain size of 0/4, 0/8, and 0/11 mm, ready to use in granule form, where the 0/4 mm fraction can be heated using a gas burner. The product is resistant to both high and low temperatures, making it suitable for year-round application.

Once applied, it withstands heavy mechanical loads, comparable to the durability of the surrounding asphalt pavement.

### Material consumption:

- approx. 25 kg/m<sup>2</sup> (1 cm layer thickness)

18



### Application:

- **Rapid repair of damage** on all road surfaces up to approx. 50 mm deep (deeper voids should be filled with multiple layers of material);
- Permanent repairs of damaged areas on surfaces exposed to heavy mechanical use, such as highways, national roads, racetracks, airports, and industrial halls (forklift traffic);
- Filling of boreholes;
- Creating a new base and surface layer after, for example, manhole adjustments."

### ACCESORIES



Wooden spatula



Wooden float



KW-type scraper



Dried sand

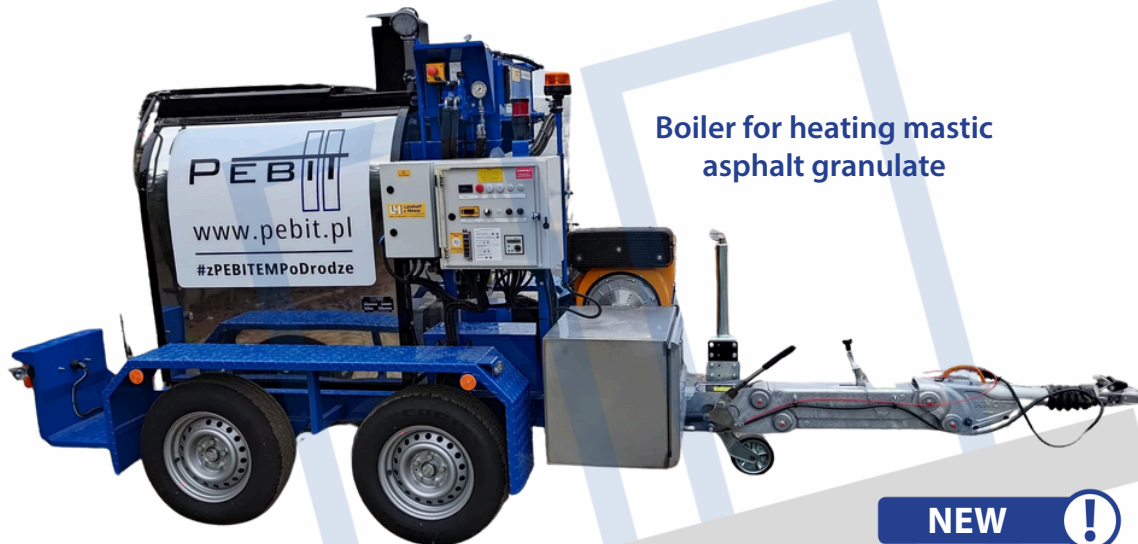


Coated aggregate



Wooden bucket





**NEW**   
**RENTAL OPTION**

## ADVANTAGES OF USING PEBIT MASTIC ASPHALT GRANULATE



### 1. DURABILITY AND RESISTANCE

PEBIT mastic asphalt granules are distinguished by exceptional resistance to abrasion, mechanical damage, and extreme weather conditions, contributing to the longevity of repaired roads.



### 2. QUICK APPLICATION

When heated in a boiler, the granules become liquid, making application easier. They are also self-compacting. This process shortens repair time while minimizing traffic disruptions. Additionally, quick hardening at low ambient temperatures allows for immediate use of the surface.



### 3. ECO-FRIENDLY APPROACH

The product is extremely durable, eliminating the need for frequent repairs in the same areas. Unlike cold asphalt mixes that require repeated maintenance, the use of PEBIT mastic granulate results in lower material and resource consumption, reducing environmental impact.



### 4. YEAR-ROUND APPLICATION

The product can be used year-round, making it a versatile solution. Thanks to its properties, repairs can be carried out in both summer and winter, significantly increasing the efficiency of road maintenance work.

## GILSOFIX Crack Repair Compound



GILSOFIX repair compound is a brilliant yet simple solution for repairing cracks and minor defects in asphalt and concrete. By combining natural asphalts with low sulfur content, high-quality thermoplastic polymers, and other fillers, GILSOFIX granules can be applied with great precision. When melted, the material liquefies and, when used correctly, penetrates even the smallest cracks.

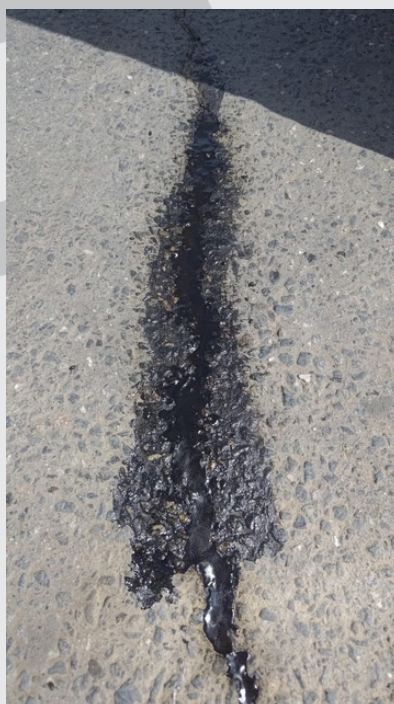
Thanks to its high flexibility and adhesion, GILSOFIX granules effectively seal cracks without the need for smoothing the fill."

20

**BEFORE**



**AFTER**





# ROMPOX® D4000 HR Repair mortar



# ROMPOX® Pavement jointing mortar



**NEW**

Two component epoxy repair mortar for asphalt and concrete surface defects. It is also used when filling cavities in curbs or manholes. The ROMPOX® mortar can be processed all year round, even at temperatures of -10°C. The product is available in 17.5 kg containers. Available in three colours: neutral, stone grey and basalt.

## Material consumption:

- approx. 1,73 kg/dm3

ROMPOX® - VERKEHR V2 is used for areas subject to extreme loads during the use of specialized road rolling stock, cranes and road machinery (e.g. in heavy equipment yards, parking lots of terminals designed for the highest tonnage in road traffic), for jointing slabs, paving blocks, or clinker. It is strong and durable. Joint width from 8 mm. Available in 25 kg paper bags plus 3 kg of hardener. Available in three colours: neutral, stone grey and basalt.



Consumption table in kg/m2, with a joint height of 30 mm:

Joint width	Block size					
	40×40 cm	20×20 cm	16×24 cm	14×16 cm	9×11 cm	4×6 cm
8 mm	2,0	4,0	4,2	5,5	8,0	15,0
10 mm	2,5	5,0	5,3	7,0	10,0	18,8
12 mm	3,0	6,0	6,2	8,3	12,0	22,5

## EUROREPAIR PC 96

**EUROTEAM**  
construction chemicals



EUROREPAIR PC 96 is a solvent-free, 2-component epoxy resin mortar.

The pigmented, highly-fill mortar is characterised by easy handling and rapid curing.

### Range of application:

For repair of damage to concrete surfaces, especially repair of joint edges, broken corners, re-profiling. Priority use on highly stressed concrete traffic areas subject to high load.

22







## EUROREPAIR PC 96 AS



EUROREPAIR PC 96 AS is a solvent-free, flexible, two-component epoxy mortar. It is characterized by easy handling and fast curing.

### Range of application:

- For indoor and outdoor use, as well as in traffic areas, production zones, and warehouses.
- Designed for repairing asphalt surface damage, particularly for joint edge repairs, damaged corners, profiling, and fixing minor cracks and voids in asphalt.
- The mortar is primarily used in heavily loaded asphalt traffic areas, such as: industrial hall floors, and zones subjected to heavy vehicular traffic.

### Product features:

- Resistance to aging.
- Higher mechanical strength than asphalt.
- Resistant to oils, diluted acids, alkaline solutions, salt solutions, and various solvents.

### Material consumption:

- approx. 2,14 kg/dm<sup>3</sup>

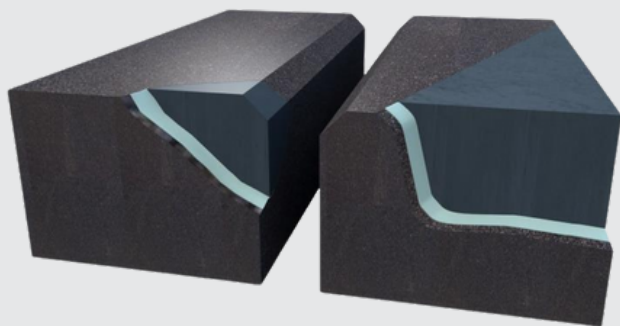
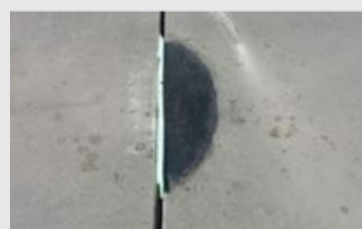
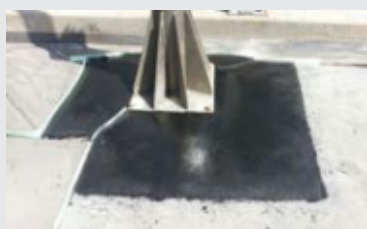


Fig. 1 Filling the void with EUROREPAIR PC 96 AS compound

- Mortar: EUROREPAIR PC 96 AS
- Primer: EUROREPAIR PC 96 AS



## Road asphalt



20 kg



480 kg



Does not  
stick to the  
cardboard

Road asphalt packed in silicone-lined boxes.

Can be used as a recycler additive to protect processed edges against water, etc.

Frequent repairs to road surfaces generate a large amount of waste. This waste is referred to as road planings. However, it can be successfully rebuilt into damaged road surface, thus contributing to sustainability. The use of reclaimed road surface material also generates significant savings, compared to asphalt concrete produced in asphalt mixing plants or poured asphalt delivered in asphalt kettles. Adding road asphalt to road planings can

significantly improve the quality of the mix produced, and thus the durability of the repaired surface.

Road asphalt is available in:

- 20 kg silicone-lined boxes

Available types of asphalt

- 50/70,
- 70/100,
- modified 45-80-65.

24

Add asphalt, improve quality



### ACCESORIES



Sealer  
applicator



Bitumen pouring  
can 8 l



Bitumen pouring  
can 3,5 l



Bitumen pouring  
can with spout 3.5 l



## Cold mix asphalt



25 kg



1000 kg

Cold mix asphalt is used for year-round road surface maintenance.

It is mainly designed for spot repairs and removal of the effects of retrenchment and deformation of road surfaces, maintenance of railroad crossing surfaces, filling in the edges of parking lot pavements and paving around drains.

### Material consumption:

- approx. 25 kg/m<sup>2</sup> (1 cm layer thickness)

## EUROLASTIC PRO M 40

### MULTI-PURPOSE POLYURETHANE SEALANT



600 ml



12 pieces

EUROLASTIC PRO M 40 is a 1-component, silane-modified polymer-based sealant that is characterised by exceptional mechanical strength.

### Range of application:

- expansion and connection in indoor and outdoor areas subject to heavy loads such as warehouses, parking decks, underground garages, production halls, tunnels, etc.
- for surfaces subject to regular machine cleaning
- joints in sewage and waste water plants with municipal waste
- gluing of various plastics, such as EPDM profiles
- for indoor and outdoor use
- for pedestrian and traffic areas
- food industry

25



### ACCESORIES



Hand tamper



SDS tamper

### ACCESORIES



Hand gun

## Fast-setting cement mortar



25 kg



1000 kg



## Silencing paste



### Use:

- adjustment of the height of manhole rings
- adjustment of the height of the flanges of rainwater drain flanges
- replacement of manhole rings and rainwater drain flanges
- installation work where rapid mortar strength increase are required
- emergency repair of street drainage systems

Paste forming a soundproofing layer. Durable, resistant to high loads, frost and road salt.

### Features:

- soundproofing layer in the form of self-curing paste available
- in a package
- for all shapes and sizes of unstable manhole covers
- effective silencing
- high-quality alternative to silencing rings

26





## Manhole cover plate



### Use:

Steel manhole cover plate with reinforced cross-support underneath, designed for covering manholes during the construction phase.

Intended for use on construction sites:

- As a drive-over protection for vehicles;
- For personnel safety;
- To prevent internal contamination of structural elements.

## Sheet metal basket



### Use:

Sheet Metal Basket for Manhole Cover Plates, enabling easy storage and transport. The design allows for stacking of the crates. Intended for use on construction sites and for simple storage of manhole cover plates.

Capacity:

- 12 x manhole cover plates (8 mm thick)
- 10 x manhole cover plates (10 mm thick\_

27

## Manhole cover guard



### Use:

The manhole cover guard provides a quick, cost-effective, and simple solution for protecting sewer manhole covers from contamination during preparatory work, as well as from dirt and debris caused by construction site traffic. Thanks to the adhesive tape placed on the underside, the cover remains securely in place, preventing displacement due to wind gusts or accidental contact.

### Features:

- Easy and quick application;
- Strong adhesion thanks to double-sided adhesive tape;
- Cost-effective protection for sewer manhole covers.

# Compensation rings



Compensation rings made from plastics are prefabricates used to build surface finials of manholes and rainwater drains with DN/ID internal diameter between 150 mm and 800 mm and height from 10 mm to 150 mm (in class D400).

Broad range of compensation ring dimensions allows to adjust the total height of the manhole or rainwater drain based only on the prefabricated elements.



Name	Product	Cross-section	Description
T1			Flat and round compensation rings
T1R			Round compensation rings with external edge
T1C			Flat and round compensation rings with assembly openings
T1K			Wedge and round compensation rings for adjustment of manhole and water drain inclination angle
T2			Compensation rings with bevel for laying at the curb



## Dirt trap plate



This plate prevents waste, debris, tools, etc. from falling into the well. It also prevents concentrated volatile substances from escaping from the well. The rubber ring on the edge ensures a good fit in the manhole, and the clamps allow quick installation of the plate.

It is unnecessary to enter the manhole, the interior of the manhole is protected against impurities, which at the same time prevents damage to the interior.

### Technical data:

- outer diameter (approx.): 620 mm
- metal part diameter: 550 mm
- weight (approx.): 9 kg

## Metal formwork

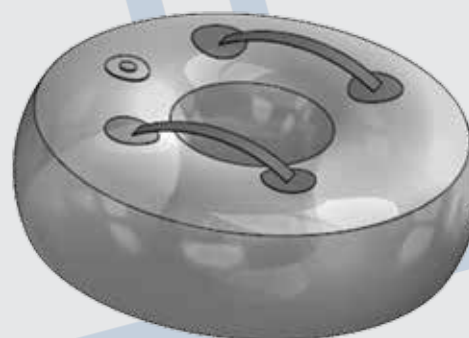


The use of metal formwork allows for tight filling with mortar of the cavity that forms under the manhole ring when it is lifted to the level of the road surface. A special screw joint allows for even pressure to be applied to the manhole wall.

### Advantages:

- 3 funnels allow easy and accurate filling of the cavity with mortar
- even pressure on the manhole walls
- the use of spring steel guarantees a long life of the formwork

## Pneumatic formwork



Lightweight, flexible, functional PU-TS pneumatic formwork to allow the execution of a levelling and repair layer from fastsetting cement-based compounds, polyester resins, which provide the foundation for the installation of TVR T manholes and rainwater drains.

Also used to protect the sewer system against contamination during the removal of damaged manhole tops.

## Asphacal TC

### Protection of tack coat/asphalt emulsion



Asphacal® TC is a high-performance calcium-based suspension. Developed specifically for civil engineering, the product is available as a slow-sedimenting and ready-to-use lime milk concentrate.

**Asphacal® TC protects the asphalt emulsion used for interlayer sprinkling against mechanical damage and at the same time improves the adhesion between bituminous layers.** The polymer additives contained in the formulation ensure the homogeneity of the formulation and at the same time facilitate its application. The protected asphalt emulsion remains at the site of application, and the protective layer keeps the clothing and footwear of construction workers clean. The use of Asphacal® TC protects work contractors against contamination of areas adjacent to the construction site by asphalt emulsion present on the wheels of vehicles used on the construction site.

Asphacal® TC can be applied after the asphalt emulsion has set. After several minutes, when water has evaporated from the formulation, heavy equipment can re-enter and the laying of the next layer of pavement can begin.

#### Use:

- increases the adhesion of the mineral-asphalt layers
- reduces mechanical damage to the asphalt emulsion bonding layer caused by vehicles and people
- eliminates the adhesion of the asphalt emulsion tack coat to the wheels and tracks of the machines used on site

#### Consumption:

- 1.2 t of material for 25,000-50,000 m<sup>2</sup>

30



REPAIR OF A4 MOTORWAY, NEAR THE TOWN OF STRZELEC OP.





## Fibreglass reinforcement grid



The grid is made of fibreglass or glass/carbon fibre. They are designed to reinforce various surface layers.

The intensity of traffic increases, which increases the dynamic load. Temperature fluctuations, vehicle weight, acceleration and braking creates road unevenness, ruts and cracks. Non-reinforced asphalt concrete cannot handle high spot loads, so the main task of the reinforcement geogrid is to absorb tension and distribute it. This avoids cracks, ruts, waves and extends the roadway lifetime.

The geogrids are impregnated with a polymer-bitumen composition, which ensures good adhesion to the asphalt concrete load-bearing layer. The geogrid does not act as a separation layer, but adheres tightly to the top and bottom of the concrete asphalt. Good adhesion provides high shear load resistance of the surface.

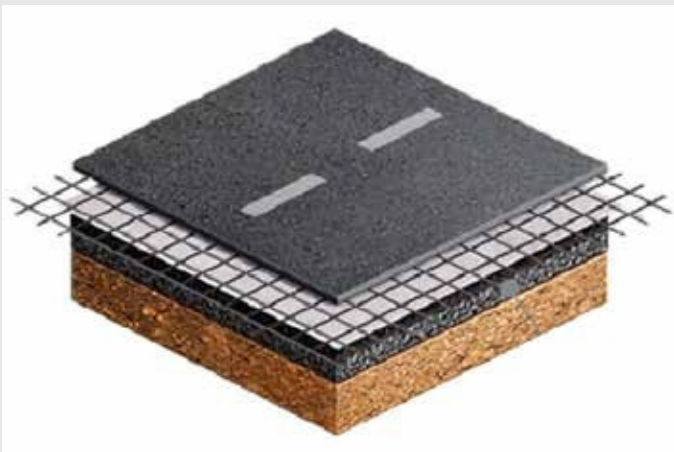
Available roll widths: 1-5 m (length: 50 m).

### Benefits:

- no additional anchoring is required
- it does not stick to the wheels of machines, does not peel off the bitumen layer, so the equipment can be freely operated on the surface of the canvas
- reduces the use of bitumen emulsion as opposed to using geogrids with untreated textiles. This is because the geogrid, including the filled cells, is already impregnated with bitumen

### Available grid types:

- fibreglass grid 50/50
- fibreglass grid 80/80
- fibreglass grid 100/100
- fibreglass mesh 120/120
- glass/carbon grid 120/120
- glass/carbon grid 120/200



## White solvent-based acrylic paint

 33 kg  
 300 kg  
 726 kg



Road paint for horizontal marking of out-of-city and city roads and can be used with glass micro beads.

### Characteristics:

The paint is made on the basis of acrylic resin in a dispersion of organic solvents. It is characterized by its snow-white colour, high durability and abrasion resistance. Its short drying time makes it very convenient to use. The paint is designed for use on bituminous and concrete surfaces.

## Spray primer



Practical primer for priming small areas.

Volume: 600 ml  
 Capacity: approx. 2 m<sup>2</sup>



32

## Colourful solvent-based acrylic paints

 33 kg



### Available in the following colours:

- black – for painting over previous markings,
- yellow – for temporary markings,
- blue – for painting pictograms and parking spaces for the disabled,
- red – marking pedestrian crossings, speed bumps, bicycle paths.
- green - for electric vehicle charging stations do miejsc ładowania samochodów elektrycznych.

## Solvent

 18 kg

Toluene-based solvent for road paints designed for diluting road paints at ambient temperatures below 10°C and for washing equipment and tools used for the application of road paints and chemically-curing compounds.

## Spray cleaner



Cleaner for removing bituminous, tarry, oily and greasy soils.

Volume: 500 ml

Vegetable esterbased formula. Suitable for removal of soiling from car paints (check the surface effect before application).





## Worksite marker

### S Mark

12 szt.  
900 szt.



Shelf-life: 6 months

### Fluo TP

12 szt.  
900 szt.



Shelf-life: 12 months

Aerosol for fluorescent worksite marking. S MARK is used for earthwork, pipeline, construction work, road maintenance, and underground network worksite marking. Easy and convenient to use, S MARK is equipped with the patented Soppec "TP" safety head.

#### Temperature range:

- from -20°C to 50°C.

Available in boxes of 12 pcs. in various fluorescent colours:

- white
- yellow
- orange
- red
- pink
- green
- blue



FLUO T.P. SOPPEC is a special indoor and outdoor worksite marker.

Thanks to its excellent properties, the paint shows very good adhesion to any type of substrate asphalt, rock, soil, concrete, etc. The paint performs well even in harsh weather conditions (moisture, low temperatures, etc.)

#### Features:

- rapid drying
- very long life and covering capacity: 1 aerosol applied using a Soppec one-wheel applicator is sufficient to mark a durable 80 m long and 2 cm wide line.
- bright, fluorescent colour (green, orange, pink, yellow)
- high performance, excellent covering properties
- low temperature resistance
- safety cap for transportation

#### Use:

- utilities: electricity, water, gas, telephone lines, etc.
- land-surveying, geology
- marking of public works (roads, motorways, bridges, ports, etc.)
- mining industry, construction, etc.

#### ACCESORIES



cane

PRACTICAL APPLICATOR

## Bagged sorbent



30 l



60 szt.

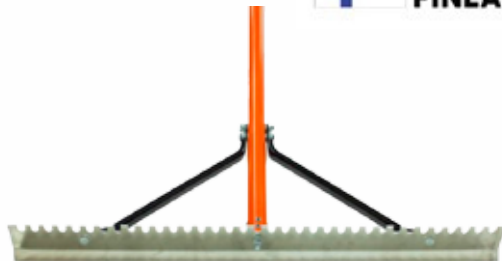


Designed to remove all liquids, oils, fuels, other oil, grease, lubricants, coolants and water from the surface. It also absorbs all chemicals – acids, bases and solvents except hydrofluoric acid.

### Granulation:

- 0,5 mm – 1,5 mm
- 1,0 mm – 4,0 mm

## Rakes and lutes



Rakes and lutes for raking, levelling and luting asphalt, concrete, gravel, ballast, sand and soil.

- all tools are manufactured from durable and corrosion-resistant lightweight aluminium alloys
- the head can be used on both sides
- powder coating; orange colour RAL2004

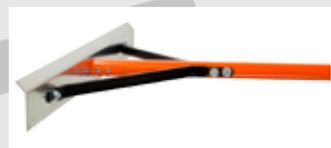
### 720 mm rake / levelling bar

Shank length: 2 m. Coating: RAL 2004. Head width: 720 mm. Weight: 1.88 kg

### Types of lutes:

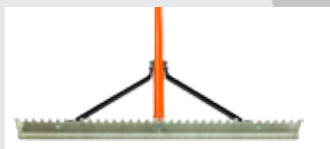
„Z” TYPE

„L” TYPE



„RAKE” TYPE

„KW” TYPE



34

## Absorbent mat – roll



46 m



Absorbs oils and oil-based substances.

## Absorbent Mat in Sheets



200 szt.



Absorbent mat with a size of 500 mm x 400 mm x 3 mm. Absorbs all liquids, water, oils and other chemicals.



Recessed screws in the strip provide ease of cleaning



## Cleaner



20 l



1000 l



Cleaner for removing bituminous, tarry, oily and greasy soils.

Product prevents asphalt from sticking to metal parts.

Vegetable ester-based formula.

## BUUMOSOL cleaner



10 l



Special water-based alkaline agent (solvent-free) for removing oil, grease, petroleum-based residues, detergents.

Biodegradable concentrate in 10-litre containers.

## PEBIT separation concentrate



20 l



210 l



1000 l



PEBIT separation concentrate is designed for the preparation of water-oil emulsion, used to eliminate the phenomenon of adhesion of asphalt mix to metal surfaces of asphalt mix vehicles and road paving machines, as well as for application to the surface of dump truck loading boxes and other parts which have contact with asphalt mix.

The recommended working concentration of emulsion based on PEBIT separation concentrate is 10-15%.



## Crack sealing accessories and equipment

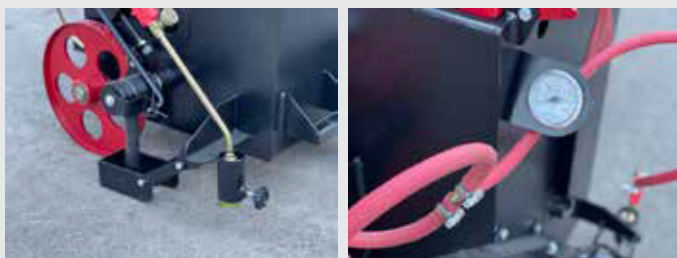
### Crack sealer applicator



Crack sealer applicator is a portable device that is widely used in road construction to fill and remove cracks and delaminations in asphalt pavement.

#### TECHNICAL SPECIFICATION:

- heating with a gas burner to 180-210°C
- thermometer on the housing
- agitator inside the tank to mix the sealant
- metering valve to control sealant feeding
- manoeuvrability and mobility
- presence of swivel wheels
- gas pressure regulator
- volume: 70 l
- capacity: 100 l/h
- propane consumption: 0.8 kg/h
- working pressure in the regulator: 1.5 Pa



### Sealer applicator



Used for pouring material into joints. Ensures uniformity of distribution and aesthetics of workmanship.

### Watering cans for hot-pour sealants and road asphalt



Bitumen pouring can 8 l



Bitumen pouring can 3,5 l



Bitumen pouring can with spout 3.5 l

### Sievert titanium burner



The set includes:

- Ultra-light titanium burner 114 kW (2618 g)
- Propane hose: 6.3 x 5 mm, 5 m length
- Pressure regulator: 4 bar, 12 kg/h



## Measuring instruments



### Electronic level



Magnetic Electronic Level with LCD Display, Waterproof IP67, Stabila Tech 196M DL, 183cm.

The TECH 196M DL electronic level from STABILA is perfectly equipped for everyday construction site use.

Thanks to ULTRA-PROTECT technology, washing under running water is no problem. Its highly precise electronic module does not require recalibration after falls from height or temperature fluctuations.

### Measuring wheel



Wheel for measuring distances over straight and curved sections. It is perfect for road surveys, construction sites, and land surveying.

### Measuring wheel with a reset button in the grip



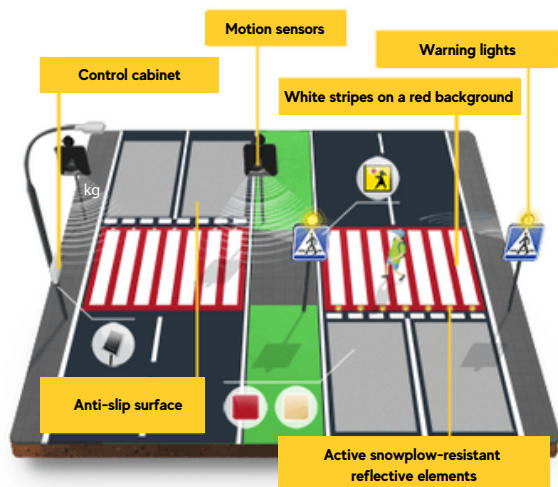
### THERMOMETER VOLTcraft UKT-100 -40 TO 280°C



This thermometer is a three-in-one device and it is suitable for all temperature measurements. A stainless steel bayonet probe can be folded to save space, and also to avoid the risk of damage. Temperature can be measured in a contactless manner using the built-in pyrometer, while internal measurements of materials by using a bayonet.

Wheel for measuring distances over straight and curved sections. It is perfect for road surveys, construction sites, surveying, and features a reset button integrated in the grip.

## Smart Pass



### Use:

SmartPass is a safe, intelligent pedestrian crossing system. It ensures pedestrian safety and comfort during the crossing process, while also providing drivers with instant information on the presence of pedestrians at the crossing.

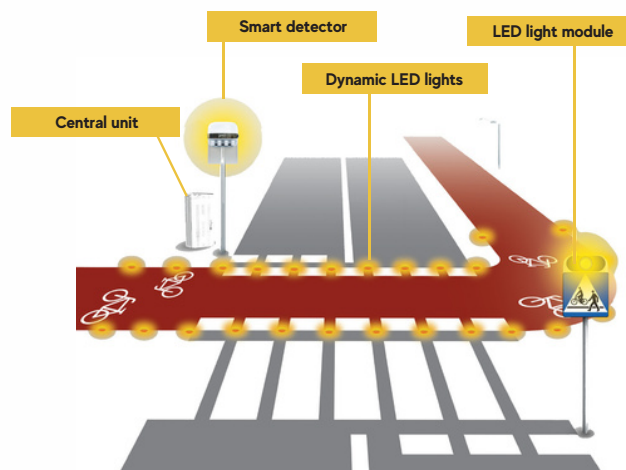
### How does SmartPass work?

When a pedestrian is detected in the crossing zone, motion sensors activate the SmartPass system. Synchronized LED lights begin to flash towards the driver at a uniform frequency. Simultaneously, a voice prompt is sent to the pedestrian, advising caution. Once the pedestrian leaves the crossing zone, SmartPass turns off both the light and voice signals.

The system includes:

- APEO module,
- traffic sign module,
- warning lamp module,
- motion sensor module,
- Smart housing,
- control cabinet,
- sound module,
- monitoring module.

## SmartBpass



### Use:

The intelligent bike path is an advanced technological solution that significantly improves the safety and comfort of cyclists. Equipped with modern lighting systems, motion sensors, and interactive markings, the intelligent bike path adjusts to current conditions and traffic levels, providing optimal cycling conditions.

### Active Lighting System

The system uses pulsating horizontal and vertical lights that indicate the cyclist's direction of travel.

### Visibility Range

It ensures increased visibility of cyclists for drivers, even up to a distance of 1,000 meters.

### Effectiveness in Challenging Conditions

It works effectively even in rain, snow, and other adverse weather conditions.

### Research-Proven Effectiveness

This is the only device of its kind in Poland, tested for its ability to enhance safety and comfort for road users.

### Faster Driver Response

Research by Euroasfalt confirms that drivers respond more quickly to SmartBpass light signals, especially when they are activated by pedestrian movement."



## Active D6 sign



Active D6 sign – a warning system placed in front of pedestrian crossings, consisting of a D6 sign, motion sensors, and a 12V, 200mm orange warning lamp.

The active D6 sign is installed in locations with traffic safety concerns. The flashing warning signal alerts drivers to exercise extra caution. The signal is emitted by the lamp located above the D6 sign. Thanks to the motion sensors, the controller activates the warning signal only when a pedestrian is present at the crossing.

Active D6 signs can be powered either by the nearest electrical grid or by solar energy.

## Active lighting



Enhanced lighting improves pedestrian visibility and increases safety. Smart LED lighting allows drivers to react appropriately when a pedestrian is near a crosswalk.

When a pedestrian is detected, a motion sensor activates the lighting, directing a stronger beam onto the crosswalk.

### Energy savings

Electricity and road infrastructure maintenance costs—particularly those associated with lighting—are currently among the most significant items in municipal budgets. Upgrading old, inefficient lighting systems is one of the best ways to reduce electricity expenses.

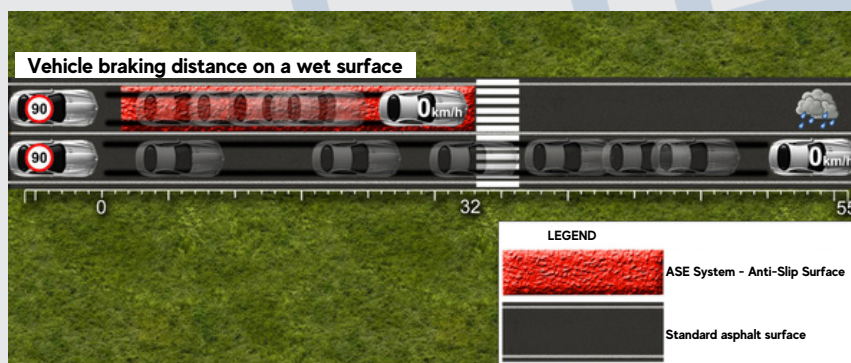
Replacing conventional solutions with LED lighting fixtures allows for substantial cost savings.

## ASE anti-slip surface

The ASE System is an anti-slip surface based on polyurethane resin and bauxite aggregate with a high friction coefficient.

Any factors that reduce a vehicle's adhesion to the road surface are potential sources of skidding. These include wet or oily surfaces, overloaded vehicles, worn or improperly inflated tires, mud, or

leaves, snow and ice, sudden braking, or excessive speed relative to road conditions all contribute to an increased risk of skidding. In such cases, properly designed road surfaces with high roughness can help reduce vehicle slippage



## Bituminous mixture shovel



Heavy-duty, made in Poland, without bent edges.

## Hardened spade with "T"-type shaft



Hardened spade with a "T"-type shaft. Made in Poland.

## Wooden putty



Wooden putty useful for spreading hard-applied asphalt. Dimensions: 300 mm x 80 mm.

## Wooden float



Wooden float useful for spreading cast asphalt. Dimensions: 290 x 140 mm

## Rubber float



Rubber float for the application of sealants, cold applied sealants, repair mortars and other materials

## Tamper



Hand tamper for compacting cold patch materials.

## SDS Tamper



Tamper with SDS Plus tip, perfect for compacting repair materials, e.g., after drilling. Available types:

- Round Ø 95 mm
- Square 100x100 mm

## Silicone-lined box



High-temperature resistant inner folding silicone-lined box.

Sizes (width x length x height):

- SMALL (23 x 25 x 20.5 cm)
- LARGE (25 x 36 x 28.5 cm)



**Bar with cone**  
**L = 1200 mm**



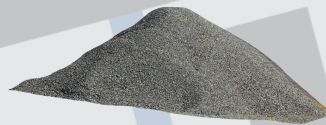
1200 mm long,  $\phi$  18 mm thick rod made of black steel, with a sharp cone at the end.

**Dried sand**



Used to roughen the surface after applying sealing compounds, repair mortars, and similar materials.

**Coated aggregate**



Coated aggregate (2/5 mm fraction, asphalt-covered). Used to roughen surfaces.

**PAK SPRAY**  
**Tar detector**



PAK Detector is a spray paint that helps identify the presence of tar on road surfaces by detecting polycyclic aromatic hydrocarbon (PAH) compounds.

**Traffic sign**  
**invalidation tape**



Temporary tape for covering traffic signs.  
Color: black with orange print.

**Available sizes: rolls of 75 mm and 50 mm width, 33 m length.**

The tape has a special adhesive that leaves no residue on the sign's surface after removal

**Temporary**  
**road marking tape**



The yellow tape is used for marking in-lane working zones, for making symbols, words and lane lines in situations where this type of marking is only intended to be temporary, can be removed "on demand". Width 12 cm, length 100 m.

**Berner and Cedima**  
**cutting discs**



Full range of disc sizes for asphalt and concrete cutting. Made by Berner and Cedima, cutting accessories market leaders.

## Rubber-coated gloves



They protect against dirt, skin abrasion and minor injuries. Made of 100% cotton fabric and coated with latex rubber in the grip part. The product features a high and precise grip.

## Latex-coated protective gloves made of polyester



The best solution – good quality, at a good price!

## Engelbert Strauss jacket



Double-sided jacket with hood and elastic cuffs.

42

## Hi-vis fleece jackets



Fleece jackets – perfect for the autumn season with reflective elements. 290-300 g/m<sup>2</sup>, very soft!

## Hi-vis jackets



Winter jacket IDEAL FOR ROAD WORKERS.

## Road tape 100 mm



Road tape is used to define the work area. It protects against dirt and debris during the application of repair mortar, sealing compounds, and similar materials.

## Warning tape



Warning tape is used to mark hazardous locations. It is used in road work, work at height and traffic.



## Road barrier on feet



Road barriers are one of the most popular barriers used to enclose a work site. Free standing road barrier with 360-degree swivel legs.

## Traffic control sign



Double-sided reflective sign in the form of a lollipop for traffic control.

## LUX 1 white glass reflective element (50 mm)



Reflective glass elements are made of highly durable tempered glass (spot pressure resistance of 80 tons). Snowplough resistant. Installed both in concrete and asphalt roads.

## LUX 1 red glass reflective element (50 mm)



Reflective glass elements are made of highly durable tempered glass (spot pressure resistance of 80 tons). Snowplough resistant. Installed both in concrete and asphalt roads.

## PVC cat's eye (white/red)



Spot reflectors can be glued to asphalt or concrete surfaces or installed on road surfaces or pavements. By reflecting light, they indicate driveway boundaries or the edges of the road, islands, etc. to drivers.

## PVC cat's eye (white/white)



Spot reflectors can be glued to asphalt or concrete surfaces or installed on road surfaces or pavements. By reflecting light, they indicate driveway boundaries or the edges of the road, islands, etc. to drivers.

## Speed bump 50 mm

### Centre piece

500 x 420 x 50 mm

### End piece

230 x 420 x 50 mm



50 mm high speed bump, length in the driving direction 420 mm, width 500 mm (two elements required for 1 meter of the speed bump). Fixed to the surface with anchors or dowels. Yellow stripes make it easy to see the bump for the driver. They are used to physically reduce the speed of vehicles.

## Vertical traffic panels



Vertical traffic panels are made of high-quality PE HD blow moulded plastic. On one side it has a 60 x 60 fixing bracket and on the other one a square bracket with a diameter of 40 mm which allows a lamp or light wave to be attached. Vertical traffic panel, depending on the customer's needs, can be wrapped on one or both sides with 1st, 2nd or 3rd generation film.

## Heavy base 28 kg



Base for fixing traffic sign posts, vertical traffic panels and other elements. Weight of 28 kg. Made from recycled cable sheath. It has 6 round and square holes. 30 pieces per pallet.

## U-21 Wiva flexible direction panel



The Wiva panel is a flexible traffic panel. It is resistant to breakage and collision.

Dimensions: 1200 x 270 x 5 mm

Weight 1.8 kg

## Wiva rubber base



Wiva rubber base. Dimensions 600 x 400 x 105 mm.

Weight 15 kg.

50 pcs. per pallet.

44

## Painted traffic cones



Traffic cones made of soft PVC.

White stripe-painted cones.

- height 350 mm, weight 0.8 kg

- height 500 mm, weight 1.1 kg

- height 750 mm, weight 3.1 kg

## Stripe-taped traffic cones



Traffic cones made of soft PVC.

Reflective stripe-taped cones.

- height 300 mm, weight 0.8 kg

- height 500 mm, weight 1.1 kg

- height 750 mm, weight 3.1 kg

## U-5a/U-5b traffic bollards



U-5 traffic bollards are used to mark obstacles on the roadway, i.e.: lane dividers, pedestrian refuges, isolated islands, etc.

## Traffic delineators



A wide range of traffic delineators is available.

For more information and a wider range of BRD products, visit [www.pebit.pl](http://www.pebit.pl)

For inquiries, please send an e-mail to [julia.kolodziejczyk@pebit.pl](mailto:julia.kolodziejczyk@pebit.pl)



### PEO S-1 Point Reflective Element



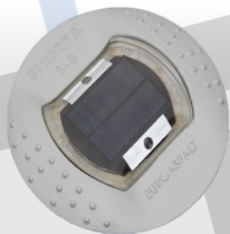
S-1 is a point reflective element that provides high visibility on the road. Its design allows for easy installation and replacement, and it is resistant to wear and damage. It is ideal for roads with poor visibility and medium traffic volume.

### PEO S-2 Point Reflective Element



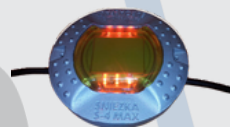
S-2 is a point reflective element that provides high visibility on the road. Its design allows for easy installation and replacement, and it is resistant to wear and damage. It is ideal for roads with poor visibility and medium traffic volume.

### APEO S-3 Active Point Reflective Element



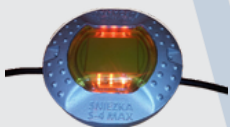
S-3 LED are solar-powered reflective elements that provide excellent road visibility and serve as an advanced alternative to traditional markings. They are characterized by durability, energy efficiency, and programmability, making them ideal for road safety and urban infrastructure applications.

### APEO S-4 Cable Active Point Reflective Element



S-4 Cable is an active point reflective element that enhances visibility and increases safety. It emits light in two directions, improving pedestrian visibility and alerting drivers to the presence of pedestrians at crossings. Its durable construction and replaceable LED insert make it a reliable solution.

### APEO S-4 Dynamic Active Point Reflective Element



S-4 Dynamic is an innovative active reflective element designed for use on crossings and bike paths. With its 'streak' effect, it indicates the direction of cyclist movement and enhances visibility.

### APEO S-4 DN Active Point Reflective Element



S-4 DN – advanced active reflective elements featuring a unique LED system that emits white light on top, enhancing pedestrian visibility at night and in areas without street lighting. The top LED lights turn on only after sunset and switch off at sunrise. Side LED diodes activate upon detecting movement via a sensor.

### APEO S-4 MAX Active Point Reflective Element

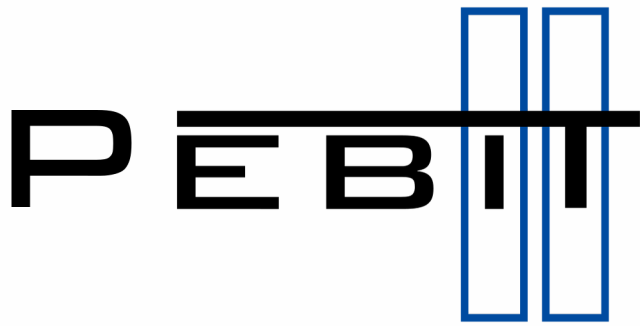


S-4 MAX is a solar-powered reflective element that enhances road safety. With a built-in solar panel, it operates independently without the need for an external power source and activates automatically after sunset. It is equipped with three LEDs on each side (3+3).

# NOTEBOOK

PEBITE





# PRODUCTS FOR ASPHALT MIXING PLANTS



## Cellulose fibers

PEBICELL



PEBICELL AD



PEBICELL AD BIT



Cellulose fibers are used as a stabilizer, primarily in stone mastic asphalt (SMA) mixtures.

We offer three types of cellulose fibers:

- PEBICELL – Loose fiber, packed in plastic bags with a capacity of up to 4 kg
- PEBICELL AD – Granulated cellulose fiber, available in 0.5-ton big bags (2 big bags per pallet) or in plastic bags with a capacity of up to 6 kg.
- **PEBICELL AD BIT – Granulated cellulose fiber with the addition of 5% asphalt and 2.5% wax.**





## IMPACT 8100 Adhesion Agent



**Ingevity**

MPACT 8100 is a high-quality product based on an entirely new chemical composition, suitable for use with all types of asphalt mixtures and other blends. IMPACT 8100 enhances the bonding between asphalt and aggregate. Asphalt mixtures incorporating IMPACT 8100 exhibit increased water resistance and better aggregate coating. In extreme cases, IMPACT 8100 improves indirect tensile strength. Additionally, in some cases, it extends the lifespan of various road surfaces. Its low-intensity odor and excellent thermal stability (30 days at 160°C) make it the first choice for adhesion enhancement in asphalt applications.

Typical dosage ranges between 0.1% and 0.4%, depending on the asphalt weight, aggregate type, and asphalt type.

### Typical characteristics:

- Physical state: Liquid
- Viscosity (cP): 350
- Density at 25°C: 0.87 to 0.91
- Flashpoint (°C): > 250





**EVOTHERM**  
WARM MIX ASPHALT TECHNOLOGY



**ingeivity**

**Warm-mix asphalt is safer, easier to use, and more cost-effective than traditional hot-mix asphalt.**

Ingevity's Evotherm warm-mix asphalt is a next-generation, sustainable product designed for modern road surfaces. It can be used as a direct replacement for hot-mix asphalt in all conventional applications. The unique Evotherm technology allows asphalt to be laid at temperatures 30–50°C lower than traditional hot-mix asphalt.

50



**EVOFLEX**



**ingevity**

**Innodur PUR AD  
Wax**



25 kg



1000 kg

### Evoflex – Advanced Additive for Increased RAP Utilization

Developed by Ingevity, Evoflex technology is a series of advanced additives that enhance the use of reclaimed asphalt pavement (RAP). Evoflex technology more effectively activates the bituminous content of RAP and can also be combined with Evotherm warm-mix asphalt (WMA) technology, allowing for production at lower temperatures (-30°C).

#### Evoflex technology provides:

- Increased solubility of RAP/RAS to maximize the use of recovered binder.
- Improved mixing of fresh and oxidized asphalts.
- Higher mixing efficiency at lower temperatures.
- Reduced need for binder grade adjustments when using recycled materials.

#### Environmental and Health Benefits:

- Reduction of vapors and greenhouse gases by up to 50%.
- Fuel savings of up to 50%.
- Lower emission levels at the worksite.

INNODUR® PUR AD is an amide wax based on polyamines and fatty acids, chemically modified with an additional adhesion-enhancing component.

#### Application Areas in Road Construction:

INNODUR® PUR AD has multiple applications due to its stabilizing and viscosity-modifying properties. It can be used in all known asphalt types. Thanks to its specific stiffening properties, it enhances the load-bearing capacity of asphalt. For this reason, asphalts modified with INNODUR® PUR AD are regularly used in highly loaded surfaces.

#### Special Applications:

- Bus stops, bus stations
- Airports, ports, container terminals

Benefits	Evotherm	Evoflex	Evoflex + Evotherm
Improved Workability and Compactability of Stiff Mixtures	++	++	+++
Higher content of effective binder from RAP/RAS	+	+++	++
Extended Transport/Season	+++		+++
Lower thermal segregation	+++		+++
Higher crack resistance	++	++	+++
Lower susceptibility to moisture	+++		+++

+ Good characteristics

++ Better characteristics

+++ The best characteristics

## RABUFLEX



5 kg



500 kg



7,5 kg



565,5 kg

Rabuflex is a high-performance elastomer modified with SIS. It serves as an additive to hot mixes, such as thermoplastic materials, asphalts, and binders, enhancing their adhesion, low-temperature properties, flexibility, and durability.

### Description

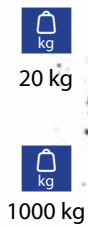
- Softening point: 130 — 140°C
- Flash point: 285°C
- Density: 500 kg/m<sup>3</sup>
- Physical appearance: white granules

### Application to asphalt:

Rabuflex is a substitute material for polymerized bitumen. It is added directly to the WMB mixer. The dosage depends on the quality of the standard bitumen and the recipe. In practice, the dosage of Rabuflex ranges from 5% to 10% of the bitumen content in the asphalt mixture. The amount of Rabuflex added can be reduced depending on the composition and quality of the standard bitumen.



## Natural asphalt



## Granulate for mineral-asphalt mixtures



Natural asphalt used in mineral-asphalt mixtures significantly improves their strength parameters. We offer natural asphalt in solid form – bagged or in bulk packaging. The product is applied by adding it directly to the mixer at the bitumen production plant.

Additive for the production of all types of mineral-asphalt mixtures in the 'hot mix' technology. The addition is done directly to the mixer during the production process of the mineral-asphalt mixture, at the stage of mixing the components of the mineral mixture, before adding the asphalt. The granulate can be used in mineral-asphalt mixing plants equipped with automatic dispensers, which dose the granulate into the aggregate before the drum mixer.

It enables the production of mineral-asphalt mixtures with higher Marshall stability, thus increasing resistance to permanent deformations. At the same time, it helps maintain the original resistance to low-temperature cracking and water damage. This additive, by improving the properties of the mineral-asphalt mixture, contributes to extending the durability of road pavements.

## Pigment



Pigment in granulate form!

MADE TO ORDER



## Rubber-asphalt granulate RAR-X



Red dye for coloring black asphalts. It is dosed directly into the mixer along with the packaging.

### Available packaging:

- 10 kg bag
- 20 kg bag

Dosage: 5% relative to the total bitumen mass.

RRAR-X GRM is added in the specified quantity during the dry mixing phase (aggregate and filler – without bitumen), using automated dosing equipment from big-bag bags or silos with a weighing mechanism and a reporting system for the amount of material added. The dry mixing time is approximately 10 seconds. Bitumen is then added. The remaining mixing time is usually not extended and should be around 25-30 seconds. Trial mixing is recommended. The temperature should not exceed 190°C, as it may negatively affect the properties of the bitumen. This principle also applies for reasons related to occupational safety, hygiene, and environmental protection during transport, storage, and processing. RAR-X GRM1 is supplied in big-bag bags weighing 600 kg and 1,200 kg or by tankers.

The stored material should be protected from temperatures above 45°C, direct sunlight, and moisture.

## Granulat gumowy



Rubber granulate for use in mineral-asphalt mixtures. This technology enhances the road asphalt's resistance to cracking and rutting. It has a higher coefficient of tire adhesion, which simultaneously generates less noise. The surface shows lower susceptibility to weather factors, water, snow, or frost, significantly reducing the risk of black ice formation.



## Cleaner



20 l



1000 l



Cleaner for removing bituminous, tarry, oily and greasy soils.

Product prevents asphalt from sticking to metal parts.

Vegetable ester-based formula.

## BUUMOSOL cleaner



10 l



Special water-based alkaline agent (solvent-free) for removing oil, grease, petroleum-based residues, detergents.

Biodegradable concentrate in 10-litre containers.

## PEBIT separation concentrate



20 l



210 l



1000 l

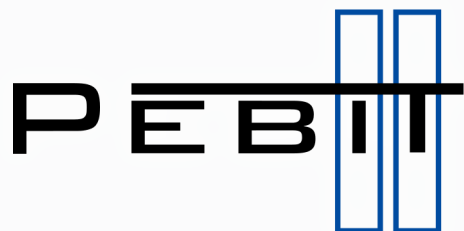


PEBIT separation concentrate is designed for the preparation of water-oil emulsion, used to eliminate the phenomenon of adhesion of asphalt mix to metal surfaces of asphalt mix vehicles and road paving machines, as well as for application to the surface of dump truck loading boxes and other parts which have contact with asphalt mix.

The recommended working concentration of emulsion based on PEBIT separation concentrate is 10-15%.







**PEBIT Piotr Wotzka**  
**47-320 Gogolin, ul. Kamienna 86**  
**POLAND**  
**Tax ID: PL7551732754**

**WAREHOUSE AND PRODUCTION**  
**47-320 Gogolin, ul. Kamienna 86**  
**POLAND**

**[www.pebit.pl](http://www.pebit.pl)**

**#PAVINGTHEWAYWITHPEBIT**